

# DISCLAIMER

**Chatham Steel Co.** does not produce or test any item described in this reference manual. All information contained in this book is founded upon data provided to Chatham Steel Co. by manufacturers of the described products. The information is intended for general reference only and should not be substituted for professional expertise which is necessary for any specific application. Chatham Steel Co. does not make any express nor implied warranty regarding the data contained in this book. Anyone making use of this information or materials must do so at his own risk and assumes any responsibility for loss or damage that may result.

*Serving Industry Since 1915*

January 2008

## Sheet and Plate Processing Capabilities

For plate and sheet processing, Chatham provides exceptional cutting tolerances and quality workmanship that will save you time and money on your pre-production processing—carbon, high strength, stainless and aluminum. Whether you need one piece or hundreds, each order is carefully processed to your specifications. Mill Test Reports for maximum quality assurance and traceability are available. We can assure fast turnaround, too, so you can count on Chatham to meet your time line, every time.

### Plasma, Laser, Oxy-fuel and Shearing

Chatham's experienced CAD operators work from your drawings or disk. Our CNC burning system provides uniform parts and shapes, time after time. Burning capabilities cover plate up to 14" thick, in widths up to 12' and lengths up to 40'.

Sheet & Plate	Plasma	Laser	Oxy-fuel	Shearing
	Thickness	Thickness	Thickness	Thickness
<b>Carbon-mild</b>	1"	3/4"	14"	1/2"
<b>High Strength</b>	1"	3/4"	14"	Inquire
<b>Stainless</b>	1"	1/2"	—	1/4"
<b>Aluminum</b>	1"	3/8"	—	Inquire

### Forming

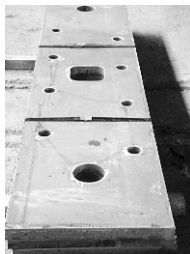
Bending/folding on carbon steel plate 1/2" thick to 12' wide to meet your specifications. Precision sheet folding up to 7 gauge by 10' long material.

### Full CNC Machining

- For CNC machining, our Haas machining centers assure close tolerance milling and drilling. With our 80" x 100" travel Chatham can machine some of the largest parts in the area. Quality control is assured by our Cordex® 1815 coordinate measuring system.

### Drilling

Exact and on-time, for your specific needs



# Structural Processing Capabilities

Not only will you get the deepest inventory and fastest delivery from Chatham, you can also expect the most exacting processing of all your structural orders.

## Cut-to-length

- Precision band sawing to meet the most critical time frames
- Mill-like ends provided by our 52" circular cold saw. Squareness within +/- 1/16"

## Beam Splitting and Straightening

Beams split and straightened to meet your Tee specifications

## Mitre Cutting

Cut to the closest tolerances

## Punching

For speed of structural fabrication

## Additional Processing Services

- **Drilling** within the closest tolerance
- **Markings** for location of attachments and lifting guides
- **Bevels** for full penetration welds
- **Copes** radius corners for ease in installation
- **Shapes** for ducting through beams
- **Cambering**

# Bar, Pipe & Tubing Processing Capabilities

## **Cut-to-length sawing**

precision sawing to meet the most critical time frames

## **Mitre cutting**

to the closest tolerances

## **Punching**

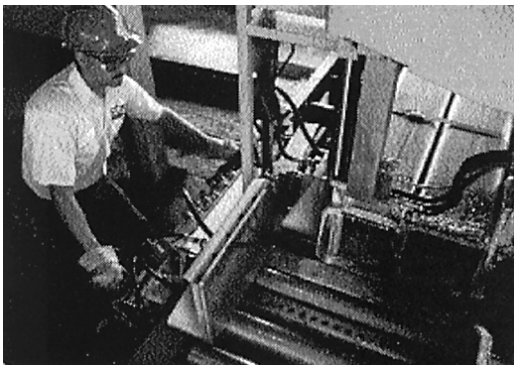
to meet your specifications

## **Drilling**

within the closest tolerance

## **Rolling**

to your production requirements



**The Chatham Commitment:** Delivering 100% customer satisfaction takes commitment: To in-depth knowledge of the market, the product and specific customer needs. To the strongest inventory available. To advanced processing capabilities. To the fastest turnaround. To the vision and leadership that keep our customers not at pace with the industry—but ahead of it for the future.

That's the commitment we've made at Chatham Steel. And the kind of service you can expect, every time you call.

**CHATHAM STEEL  
A COMPLETE CARBON & STAINLESS  
STEEL SERVICE CENTER**

---

STRUCTURAL AND BAR SHAPES

PLATES - Carbon, Alloy, Stainless, Aluminum

BARS - Hot Rolled, Cold Finished, Stainless, Aluminum

SHEETS - Black, Galvanized, Stainless, Aluminum

PIPE AND TUBING - Carbon, Alloy, Stainless, Aluminum

EXPANDED METAL AND BAR GRATING - Carbon and Stainless

FIBERGLASS GRATING

WIRE MESH AND WIRE ROPE

**PROCESSING**

SAWING - Square & Mitre

SHEARING - Braking, Forming

CUTTING - Flame, Plasma, Laser

PUNCHING, DRILLING, MACHINING

TEE SPLITTING & STRAIGHTENING

---

***Serving Industry since 1915***