

# DISCLAIMER

**Chatham Steel Co.** does not produce or test any item described in this reference manual. All information contained in this book is founded upon data provided to Chatham Steel Co. by manufacturers of the described products. The information is intended for general reference only and should not be substituted for professional expertise which is necessary for any specific application. Chatham Steel Co. does not make any express nor implied warranty regarding the data contained in this book. Anyone making use of this information or materials must do so at his own risk and assumes any responsibility for loss or damage that may result.

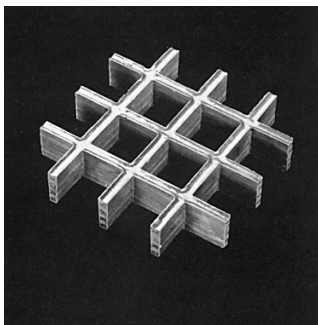
*Serving Industry Since 1915*

January 2008

**CORGRATE MOLDED SM**  
**1" SM GF**  
**1" SM PF**  
**1" SM VF**

**FRP GRATING**  
**DATA SHEET**

Molded grating is designed to provide maximum corrosion resistance coupled with moderate strength. These two primary benefits result from its interwoven construction, square mesh and higher resin to glass ratio. Its interwoven square mesh construction offers bi-directional strength which is unique in the open flooring market. This bi-directional aspect allows for increased load carrying capability per unit weight when compared against rectangular mesh molded grating.



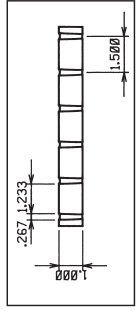
**1" SM**

TYPE	BEARING BAR DEPTH	NO. BARS PER FOOT	BEARING SPACE	% OPEN WEIGHT	APPROX.	RESIN	COLOR
1" SM GF (or)	1.00"	8	1.50"	67%	2.5#/SF	GENERAL PURPOSE	DARK GRAY (GF)
1" SM PG (or)						FIRE RETARDANT	
1" SM VF						POLYESTER FIRE RETARDANT VINYLESTER FIRE RETARDANT	GREEN (PF) ORANGE (VF)

AVAILABLE PANEL SIZES: 4' X 12'

**LOAD/DEFLECTION TABLE**

SPAN INCHES	LOADS											
	U/C100	200	250	300	350	400	450	500	750	1000	1250	2000
12"	ΔU	.014	.029	.036	.043	.051	.058	.065	.118	.161	.202	.323
	ΔC	.023	.046	.058	.069	.081	.092	.104	.188	.258	.323	.517
	ΔU	.042	.084	.106	.127	.148	.169	.190	.216	.345	.474	.593
18"	ΔC	.045	.090	.113	.135	.158	.180	.203	.230	.368	.506	.632
	ΔU	.110	.220	.275	.330	.385	.440	.495	.899	.989		
	ΔC	.088	.176	.220	.264	.308	.352	.396	.719			
30"	ΔU	.269	.538	.672	.806	.941						
	ΔC	.172	.344	.430	.516	.602	.688	.774				
	ΔU	.543										
36"	ΔC	.289	.580	.725	.870							
	ΔU	.984										
	ΔC	.450	.900									
42"	ΔU											
	ΔC	.625										
	ΔU											
48"	ΔC											
	ΔU											
	ΔC											



LOADINGS LEFT OF THE VERTICAL LINE DEFLECT LESS THAN .25"

C = CONCENTRATED LOAD LBS/FT OF WIDTH

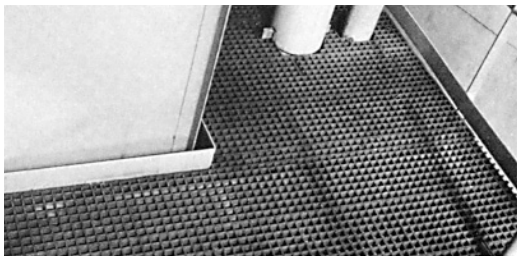
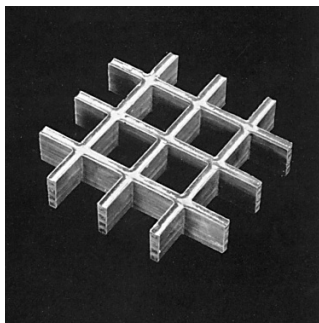
ΔC DEFLECTION UNDER CONCENTRATED LOAD (INCHES)

U = UNIFORM LOAD LBS/SQ FT

ΔU DEFLECTION UNDER UNIFORM LOAD (INCHES)

**CORGRATE MOLDED SM****1 1/2" SM GF****1 1/2" SM PF****1 1/2" SM VF****FRP GRATING  
DATA SHEET**

Molded grating is designed to provide maximum corrosion resistance coupled with moderate strength. These two primary benefits result from its interwoven construction, square mesh and higher resin to glass ratio. Its interwoven square mesh construction offers bi-directional strength which is unique in the open flooring market. This bi-directional aspect allows for increased load carrying capability per unit weight when compared against rectangular mesh molded grating.



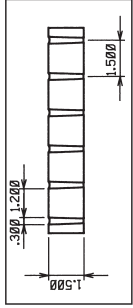
**1 1/2" SM**

TYPE	BEARING BAR DEPTH	NO. BARS PER FOOT	BEARING BAR CENTER	% OPEN SPACE	APPROX. WEIGHT	RESIN	COLOR
1 1/2" SM GF (or)	1.50"	8	1.50"	64%	3.8#/SF	GENERAL PURPOSE FIRE RETARDANT	DARK GRAY (GF)
1 1/2" SM PG (or)							GREEN (PF)
1 1/2" SM VF							ORANGE (VF)

AVAILABLE PANEL SIZES: 4' X 12', 5' X 10', 3' X 10', 4' X 8'

**LOAD/DEFLECTION TABLE**

SPAN INCHES	U/C100	200	250	300	350	400	450	500	750	1000	1250	2000
12"	U/C.006	.013	.015	.019	.021	.024	.026	.028	.043	.063	.078	.125
	ΔC.010	.020	.024	.030	.033	.038	.042	.044	.068	.100	.125	.200
	ΔU.016	.030	.038	.043	.053	.056	.066	.072	.108	.159	.199	.319
18"	ΔC.017	.032	.041	.046	.056	.060	.070	.077	.115	.170	.212	.340
	ΔU.031	.062	.076	.093	.107	.123	.138	.154	.232	.309	.388	.617
	ΔC.025	.049	.062	.074	.086	.099	.111	.123	.185	.247	.309	.493
30"	ΔU.069	.133	.161	.200	.225	.258	.305	.344	.484	.688	.859	
	ΔC.044	.085	.103	.128	.144	.165	.195	.220	.310	.440	.550	.880
	ΔU.130	.261	.326	.390	.456	.521	.587	.650	.977			
36"	ΔC.069	.139	.174	.208	.243	.278	.313	.347	.521			
	ΔU.250	.514	.613	.772	.853							
	ΔC.117	.235	.280	.353	.390	.471	.515	.573	.850			
42"	ΔU.448	.896										
	ΔC.179	.358	.448	.538	.627	.717	.806	.896				
	ΔU.731											
54"	ΔC.260	.520	.650	.761	.905							
	ΔU											
	ΔC.355	.709	.887									



LOADINGS LEFT OF THE VERTICAL LINE DEFLECT LESS THAN .25" U = UNIFORM LOAD LBS/SQ FT  
 C = CONCENTRATED LOAD LBS/FT OF WIDTH ΔU DEFLECTION UNDER UNIFORM LOAD (INCHES)  
 ΔC DEFLECTION UNDER CONCENTRATED LOAD (INCHES)