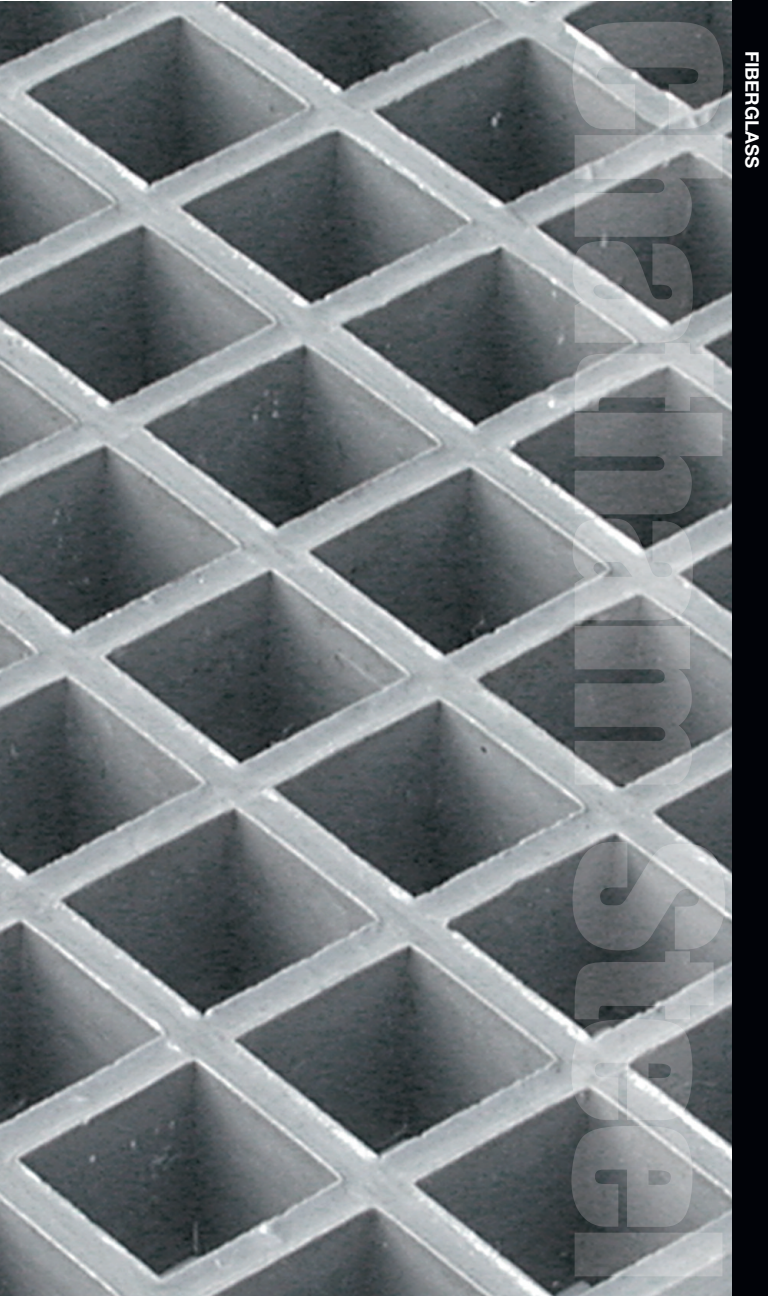


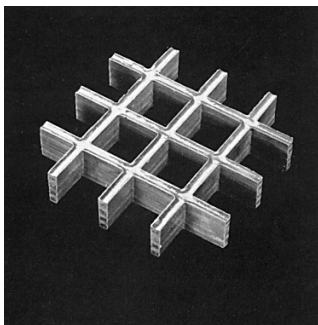
FIBERGLASS



**CORGRATE MOLDED SM**  
**1" SM GF**  
**1" SM PF**  
**1" SM VF**

**FRP GRATING**  
**DATA SHEET**

Molded grating is designed to provide maximum corrosion resistance coupled with moderate strength. These two primary benefits result from its interwoven construction, square mesh and higher resin to glass ratio. Its interwoven square mesh construction offers bi-directional strength which is unique in the open flooring market. This bi-directional aspect allows for increased load carrying capability per unit weight when compared against rectangular mesh molded grating.



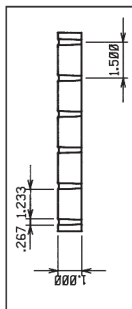
## 1" SM

TYPE	BEARING BAR DEPTH	NO. BARS PER FOOT	BEARING SPACE	% OPEN WEIGHT	APPROX.	RESIN	COLOR
1" SM GF (or)	1.00"	8	1.50"	67%	2.5#/SF	GENERAL PURPOSE FIRE RETARDANT	DARK GRAY (GF)
1" SM PG (or)							
1" SM VF							

AVAILABLE PANEL SIZES: 4' X 12'

## LOAD/DEFLECTION TABLE

SPAN INCHES	LOADS												
	U/C100	200	250	300	350	400	450	500	500	750	1000	1250	2000
12"	U/C.014	.029	.036	.043	.051	.058	.065	.073	.073	.118	.161	.202	.323
	ΔU												
	ΔC	.023	.046	.058	.069	.081	.092	.104	.117	.188	.258	.323	.517
18"	U/C.042	.084	.106	.127	.148	.169	.190	.216	.216	.345	.474	.593	.950
	ΔU												
	ΔC	.045	.090	.113	.135	.158	.180	.203	.230	.368	.506	.632	
24"	U/C.110	.220	.275	.330	.385	.440	.495	.561	.561	.899	.989		
	ΔU												
	ΔC	.088	.176	.220	.264	.308	.352	.396	.449	.719			
30"	U/C.269	.538	.672	.806	.941								
	ΔU												
	ΔC	.172	.344	.430	.516	.602	.688	.774	.878				
36"	U/C.543												
	ΔU												
	ΔC	.289	.580	.725	.870								
42"	U/C.984												
	ΔU												
	ΔC	.450	.900										
48"	ΔU												
	ΔC	.625											



LOADINGS LEFT OF THE VERTICAL LINE DEFLECT LESS THAN .25"

C = CONCENTRATED LOAD LBS/FT OF WIDTH

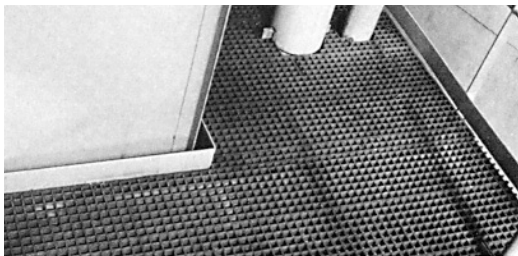
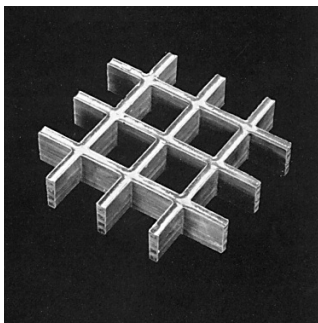
ΔC DEFLECTION UNDER CONCENTRATED LOAD (INCHES)

U = UNIFORM LOAD LBS/SQ FT

ΔU DEFLECTION UNDER UNIFORM LOAD (INCHES)

**CORGRATE MOLDED SM****1 1/2" SM GF****1 1/2" SM PF****1 1/2" SM VF****FRP GRATING  
DATA SHEET**

Molded grating is designed to provide maximum corrosion resistance coupled with moderate strength. These two primary benefits result from its interwoven construction, square mesh and higher resin to glass ratio. Its interwoven square mesh construction offers bi-directional strength which is unique in the open flooring market. This bi-directional aspect allows for increased load carrying capability per unit weight when compared against rectangular mesh molded grating.



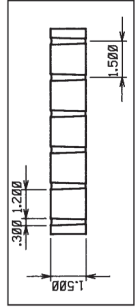
## 1 1/2" SM

TYPE	BEARING BAR DEPTH	NO. BARS PER FOOT	BEARING BAR CENTER	% OPEN SPACE	APPROX. WEIGHT	RESIN	COLOR
1 1/2" SM GF (or)	1.50"	8	1.50"	64%	3.8#/SF	GENERAL PURPOSE	DARK GRAY (GF)
1 1/2" SM PG (or)						FIRE RETARDENT	GREEN (PF)
1 1/2" SM VF						POLYESTER FIRE RETARDENT	ORANGE (VF)

AVAILABLE PANEL SIZES: 4' X 12', 5' X 10'  
3' X 10', 4' X 8'

## LOAD/DEFLECTION TABLE

SPAN INCHES	U/C:100	200	250	300	350	400	450	500	750	1000	1250	2000
12"	ΔU .006	.013	.015	.019	.021	.024	.026	.028	.043	.063	.078	.125
	ΔC .010	.020	.024	.030	.033	.038	.042	.044	.068	.100	.125	.200
	ΔU .016	.030	.038	.043	.053	.056	.066	.072	.108	.159	.199	.319
18"	ΔC .017	.032	.041	.046	.056	.060	.070	.077	.115	.170	.212	.340
	ΔU .031	.062	.076	.093	.107	.123	.138	.154	.232	.309	.388	.617
	ΔC .025	.049	.062	.074	.086	.099	.111	.123	.185	.247	.309	.493
30"	ΔU .069	.133	.161	.200	.225	.258	.305	.344	.484	.688	.859	
	ΔC .044	.085	.103	.128	.144	.165	.195	.220	.310	.440	.550	.880
	ΔU .130	.261	.326	.390	.456	.521	.587	.650	.977			
36"	ΔC .069	.139	.174	.208	.243	.278	.313	.347	.521	.695	.868	
	ΔU .250	.514	.613	.772	.853							
	ΔC .117	.235	.280	.353	.390	.471	.515	.573	.850			
48"	ΔU .448	.896										
	ΔC .179	.358	.448	.538	.627	.717	.806	.896				
	ΔU .731											
54"	ΔC .260	.520	.650	.761	.905							
	ΔU											
	ΔC .355	.709	.887									



LOADINGS LEFT OF THE VERTICAL LINE DEFLECT LESS THAN .25"  
 C = CONCENTRATED LOAD LBS/FT OF WIDTH  
 ΔC DEFLECTION UNDER CONCENTRATED LOAD (INCHES)  
 U = UNIFORM LOAD LBS/SQ FT  
 ΔU DEFLECTION UNDER UNIFORM LOAD (INCHES)